

PLAYER REALITYSYS WAV-32

Connections

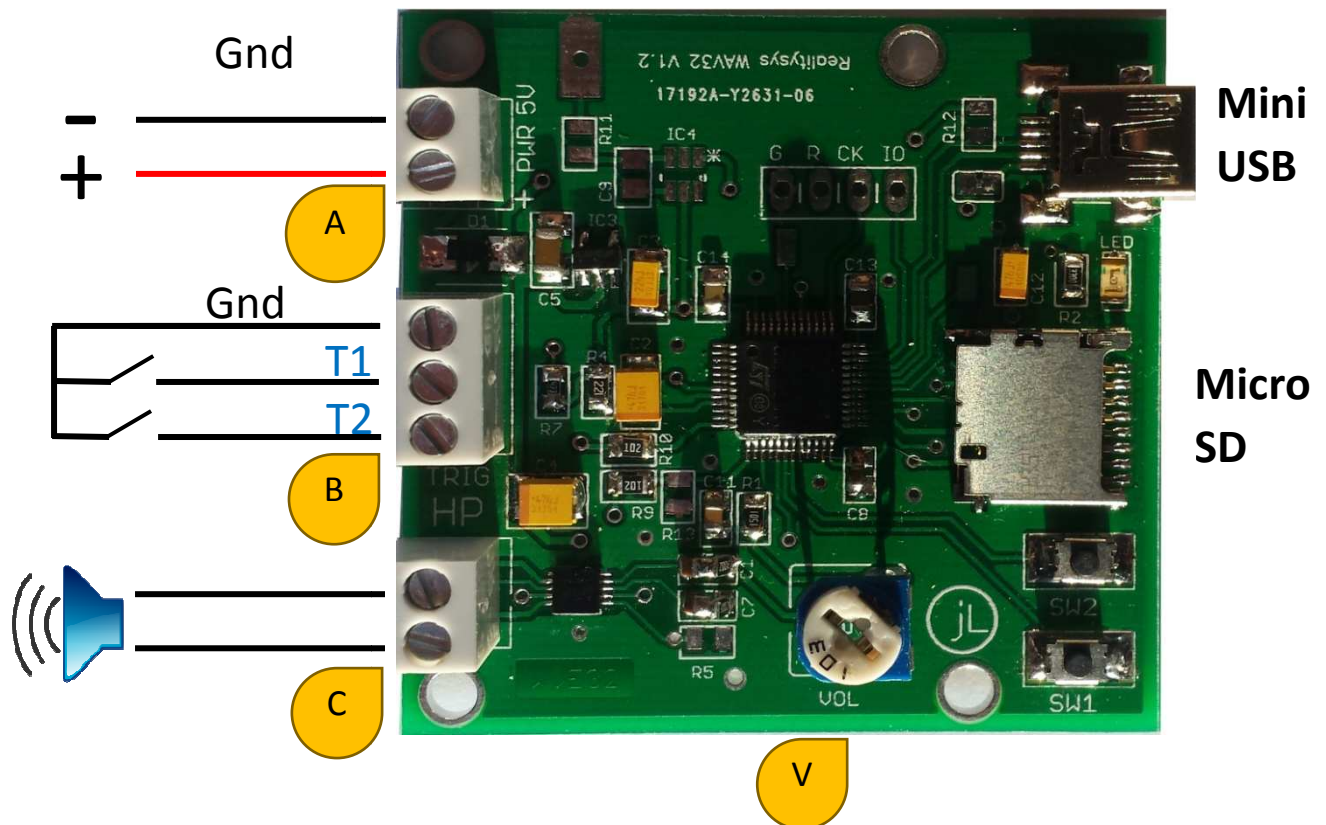
Use only DC power of 5 to 6V maximum, power must be at least 3W (500mA)

Connect the speaker on the terminal C.

Connect the trigger switch on the terminal B.

Place a micro SD card containing recorded audio files (WAV, 16bit PCM, mono format).

Connect the power supply on the terminal A (pay attention to the polarity), or either via the mini USB connector.



To play a track, use the trigger T1 or T2.

T1 trigger always start the reading of the same track (*).

The trigger T2 play sequentially next track.

By installing a permanent contact between GND and T1 or T2, the reader plays continuously, always the same track (T1) or all tracks sequentially (T2)

(*) : The track selected via the trigger T2 will be activated by the trigger T1 until you change through T2. This choice is not retained if the power is disconnected.

To adjust the volume, use the potentiometer V

Small switches SW1 and SW2 are not of interest for the user.

Caractéristiques techniques

Recording Format : :	Digital WAV/PCM, 16 bits, mono
Sampling frequency :	22khz ou 44khz.
Bandwidth (-3db) :	20 – 20khz
Output impedance :	4 – 8 Ω
Access time to a track :	< 100ms
Maximum output power :	3W sur 4 Ω
Trigger interface :	Contact to ground
Processors :	32 bits
Recording media :	Carte flash micro SD (not SDHC)
Power supply :	5-6VDC 3W 500mA
Option :	Touch starting Trigger

Approximate Recording Time :

Micro SD card	Duration
32MB	6 min
64MB	12 min
128MB	24 min
256MB	48 min
512MB	1 h 30 min
1GB	3 h
2GB	6 h